

# All the bright MOVES

Ann King has established a Sydney home that works and plays hard, as both headquarters for her design business and haven for her family.

STORY ROSE-MARIE HILLIER / STYLING ASHLEY PRATT  
PHOTOGRAPHY JOHN PAUL URIZAR



Ann chose polished-blackbutt floors for all downstairs living spaces. A custom dining table from Coopers Store is made from recycled railway sleepers with a limewashed finish. Dining chairs, Thonet. Baskets, Papaya. Candles (on cabinet ledge), Pond. Flowers from Poho Flowers. FOR WHERE TO BUY, SEE PAGE 186.



**T**here's no question that this vintage California bungalow on Sydney's Lower North Shore is elegant and well-appointed. But the mark of a great family home is the way it copes under pressure. For interior designer Ann King, who lives here with her husband Jason and their children – Xavier, 10, Tabitha, seven, and Isaiah, five – the heat is on most days. When *H&G* visited, six children were having riotous fun here, with cavoodle puppy Leo and moodle Ash in tow, yet the cleverly zoned family and formal spaces allowed everyone to get on with the business at hand.

Ann and Jason looked long and hard before they found this property in 2012. "We were renting locally until we found a place that ticked all the boxes," says Ann. "We wanted four bedrooms, easy school access, a really good floor plan and a combined kitchen/living room." Ann runs her design and colour consultancy, Sage Colour & Style, from home, so she also required a generous work space.

"This house had already been renovated, with old and new areas tastefully and practically integrated for family living," says Ann. "We had basically nothing to do structurally." The couple has, however, set up a wine cellar in the unused garage (too small for a modern family car), so Jason can indulge his passion for collecting. ▶



Tabitha and Xavier pad barefoot down the classic hall. The bevelled mirror echoes the panelling that features here and in the adjacent formal living room. Mirror, Mirror Gallery. Console table, Strand Agencies. Chandelier, Viore Design. Flowers from Poho Flowers. **OPPOSITE /** Marble and steel are a classic kitchen combination. Benchtops in Carrara marble. Stove and rangehood, live. Fridge, Fisher & Paykel. Chopping board, Accoutrement. Casserole dish, Le Creuset. Stools, Instyle Seating. **FOR WHERE TO BUY, SEE PAGE 186.**



H&G AT HOME WITH



"My favourite room," says Ann of the formal living space, but the decor also speaks to her husband's interests. The shelving at left contains Jason's cricketing memorabilia. "I figured, if I have to look at it, it should be housed in something beautiful," says Ann. Shelf unit with library ladder, Town & Country Style. Custom sofa upholstered in a fabric from Unique Fabrics. Coffee table, Globe Imports. Side tables, Coco Republic. Art glass bowl, Sentosa Designs. Rug, Designer Rugs. Chandeliers, Viore Design. The large framed artwork is an original Matisse sketch. FOR WHERE TO BUY, SEE PAGE 186. ▶



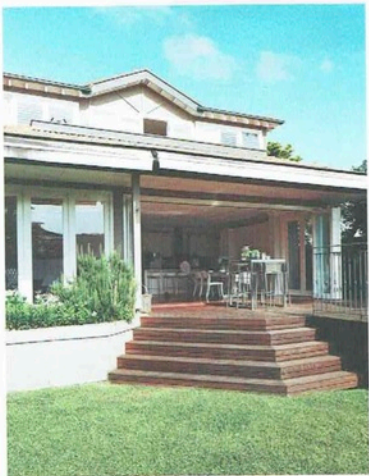
*Cool, serene tones of blue and green in the bedrooms give way to a deeper, more dramatic hue in Ann's work space. In each case, crisp white makes an effective foil.*





**ABOVE RIGHT** / Shades of blue, Ann's favourite colour, include Cole & Son Malabar wallpaper from Radford. Bedside lamps, Bloomingdales Lighting. Carpet, Cavalier Bremworth. **ABOVE LEFT** / Ann in her office with an adorable assistant, cavoodle puppy Leo. White trim pops against walls in an intense shade of blue from Murobond Paint. Desk, Coco Republic. Chair and The Rug Establishment rug, Boyd Blue. **LEFT** / The bathroom reprises the deluxe element of Carrara marble. Basin, Caroma. Towel, Cool Galah. **OPPOSITE** / Tabitha and Isaiah at play in their shared room. Bed, Coopers Store. Shelf, Lilly & Lolly. Wall ruler, Sirocchome. Osborne & Little Grove Garden wallpaper, Seneca Textiles. **FOR WHERE TO BUY, SEE PAGE 186.** ▶





◀ A guestroom, formal living room, powder room, laundry and Ann's office are located off the wide hallway. This leads to a massive, sun-splashed kitchen, dining and living zone. Bifold doors can be pushed back to open this area up to a covered entertaining deck with fully equipped outdoor kitchen, overlooking a pool and expansive lawn. Upstairs there are three bedrooms, including a main bedroom suite with sweeping city views, and a family bathroom.

The moment you step inside the house you can feel its sense of tranquillity, despite the evidence of children being busy. In part this is because of the rooms' textbook-perfect proportions, with well-balanced architectural elements framed against painted timber mouldings. But it's also thanks to Ann's skill in using colour and pattern.

"I am a 'blue' colour person," she says, a statement reflected in the cool interior palette of off-white, deep blues and paler, silvery blue-greys. Ann's decor choices imbue the house with a feeling of calm and a high degree of sophistication, without compromising its family-friendly credentials. Undeniably the heart of the home is the kitchen table, where daily life plays out, from family meals and kids' parties to homework and play, but every space, inside and out, is warm and welcoming.

"This house really suits our lifestyle," says Ann. "We have a large extended family and there's always an open door."

*Sage Colour & Style, Mosman, NSW; 0414 809 579  
or [sagecolourandstyle.com.au](http://sagecolourandstyle.com.au).*

*'I love the indoor-outdoor concept, which means the children can go from their play spaces to the pool while I supervise from the kitchen bench.'* Ann King

ABOVE LEFT / An outdoor blackboard, created with Porter's Paints Chalkboard paint, is great for keeping children occupied. Cooktop, Electrolux. Benchtop in granite from WK Quantum Quartz.

ABOVE RIGHT / Bifold doors paired with rows of french doors establish a versatile indoor/outdoor nexus. Outdoor table and bar stools, Mamagreen.

OPPOSITE / Splashdown! Bench seat and cushions in outdoor fabrics from Marco.  
FOR WHERE TO BUY, SEE PAGE 186.



# look we love

Decorative elements from classic wall panelling to blackboard paint signify zones for work, entertaining and play in this multifunctional home. Start with a simple palette and streamlined decor for family-friendly spaces; add luxe highlights for grown-up glamour.



MATERIALS  
PALETTE

Resene  
Shinto

Taubmans  
Wordless

CLOCKWISE FROM TOP Jasper timber pendant light, \$249, Schots Home Emporium; [www.schots.com.au](http://www.schots.com.au). Florence Broadhurst Japanese Floral wool-silk rug (1.7x2.4m), \$4890, Cadrys; (02) 9328 9188 or [www.cadrys.com.au](http://www.cadrys.com.au). Natural Delight oak armchair with linen upholstery, \$1056, Vavoom Emporium; 1300 577 079 or [www.vavoom.com.au](http://www.vavoom.com.au). AYT M Tota glass jars with brass lids, \$49/each, Urban Couture; (02) 9698 0736 or [www.urbandecor.com.au](http://www.urbandecor.com.au). And Then metal ampersand sculpture, \$50, Amalfi; (03) 9474 1300 or [www.amalfihomewares.com.au](http://www.amalfihomewares.com.au). Sybil mirror, \$40, Emporium; (03) 9474 1300 or [www.emporiumhome.com.au](http://www.emporiumhome.com.au).

H&G